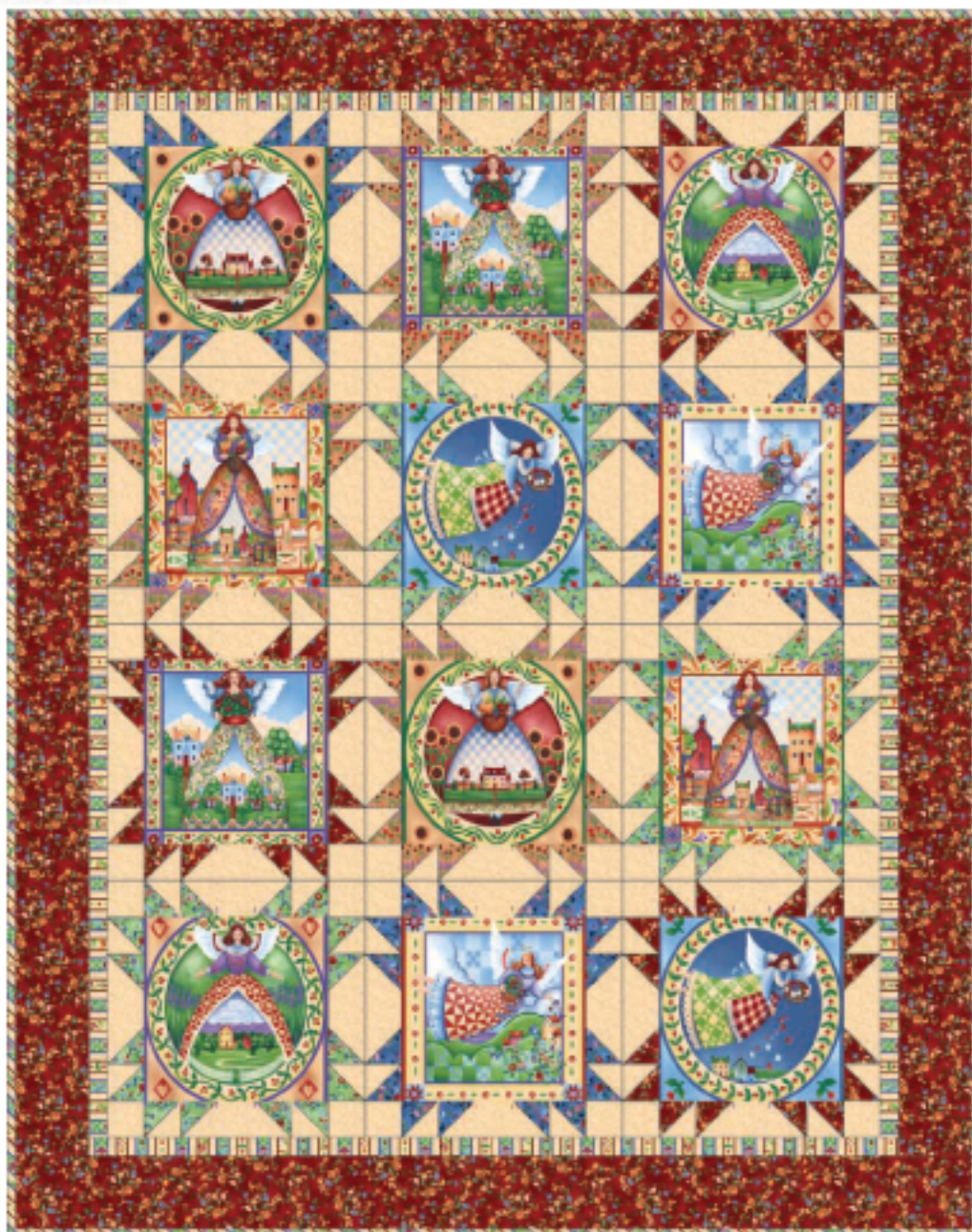


by **Jim Shore**



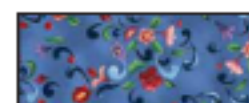
20850-E 1 1/2 yds  
(2 full panels)



20857-E 1 3/8 yds  
(background)



20852-R 1 1/8 yds  
(red border & points)



20852-Y 3/8 yd  
(dk blue points)



20852-H 3/8 yd  
(green points)



20856-T 3/8 yd  
(flower points)



20853-EG 1 1/4 yds  
(stripe accent & bias  
binding)



20851-E 3 5/8 yds  
(backing)

Finished size: 52" x 66"

## Cutting

### 20850-E

12 - angels blocks 10 1/2" squares-fussy cut

### 20857-E

48 - 6 1/2" x 2 1/2" pieces  
48 - 2 1/2" square  
48 - 2 7/8" square

### 20852-R

12 - 2 7/8" square  
24 - 2 1/2" square  
6 - 4 1/2" x 42" strips (border)

### 20851-E

2 - 58" x 42" pieces (backing)

### 20852-Y

12 - 2 7/8" square  
24 - 2 1/2" square

### 20852-H

12 - 2 7/8" square  
24 - 2 1/2" square

### 20856-T

12 - 2 7/8" square  
24 - 2 1/2" square

### 20853-EG

5 - 1 1/2" x 42" strips (accent)  
1 - 2 1/2" x 276" bias strip (binding)

## Sewing

Seam allowances are standard 1/4".

Arrows indicate pressing direction.

### To make half-square triangles

1. Draw a diagonal line corner to corner on wrong side of all 2 7/8" background pieces.



2. RST, pair up 2 7/8" red and background squares. Sew 1/4" from drawn line on each side. Cut apart on drawn line. Press away from background.

3. Repeat for 2 7/8" green, dark blue, and flower squares.

### To make center pieces

1. Draw a diagonal line corner to corner on wrong side of all 2 1/2" red, dark blue, green and flower squares.

2. RST, place 2 1/2" square on each end of 6 1/2" x 2 1/2" background pieces. Sew on drawn line and cut 1/4" from sewn line. Press to outside.



**Block Assembly**- To make quilt assembly easiest, press blocks as suggested:

Blue, Red, and Green – press one block Away from center and two blocks Toward center.

Flower – press all tree blocks Away from center

1. Side Units: Using half of each color combination, sew half-square triangles and center pieces together.



2. Top and Bottom Units: Using 2 1/2" background squares, sew remaining half-square triangles and center pieces together.



3. Sew side units to Angel Block (depending on how top and bottom unit are pressed, press away or towards center) **taking care that Angel is in the right position.**



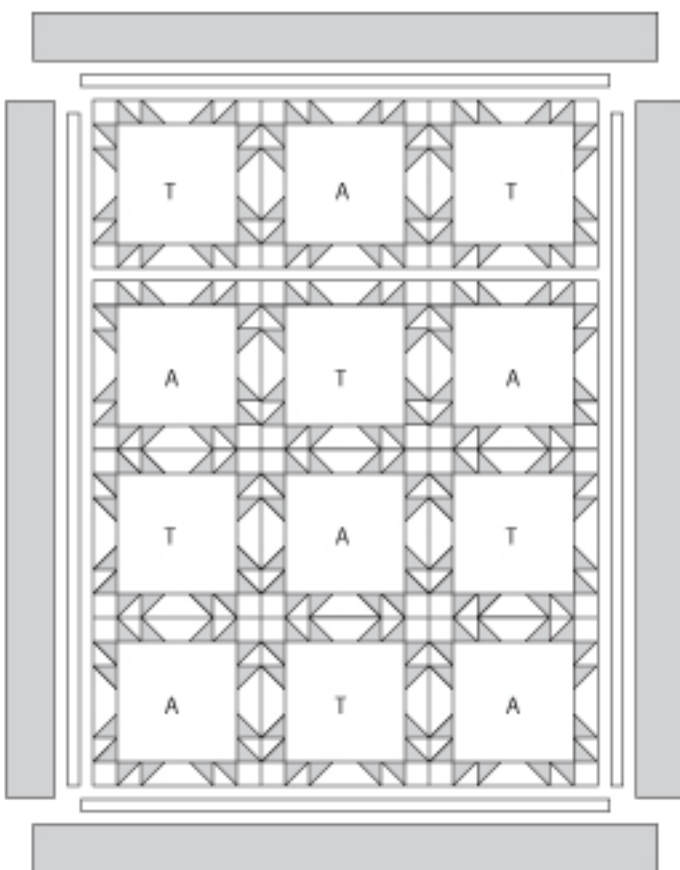
4. Sew top and bottom units to Angel Block.

Do not press until you assemble quilt top (you will be assured of opposing seams).



**Quilt Assembly** - Use color picture for block placement. (T-use block that was pressed towards center. A-use block that was pressed away from center.)

1. Join blocks to assemble rows. Press rows in opposite directions. Join rows together.



2. Sew 1 1/2" accent border strips to each side of quilt, then top and bottom. Press to accent border.

3. Sew 4 1/2" border strips to each side of quilt, then top and bottom. Press to border.

4. Layer, quilt, and bind.

While all possible care has been taken to ensure the accuracy of this pattern, we are not responsible for printing errors or the way in which individual work varies.