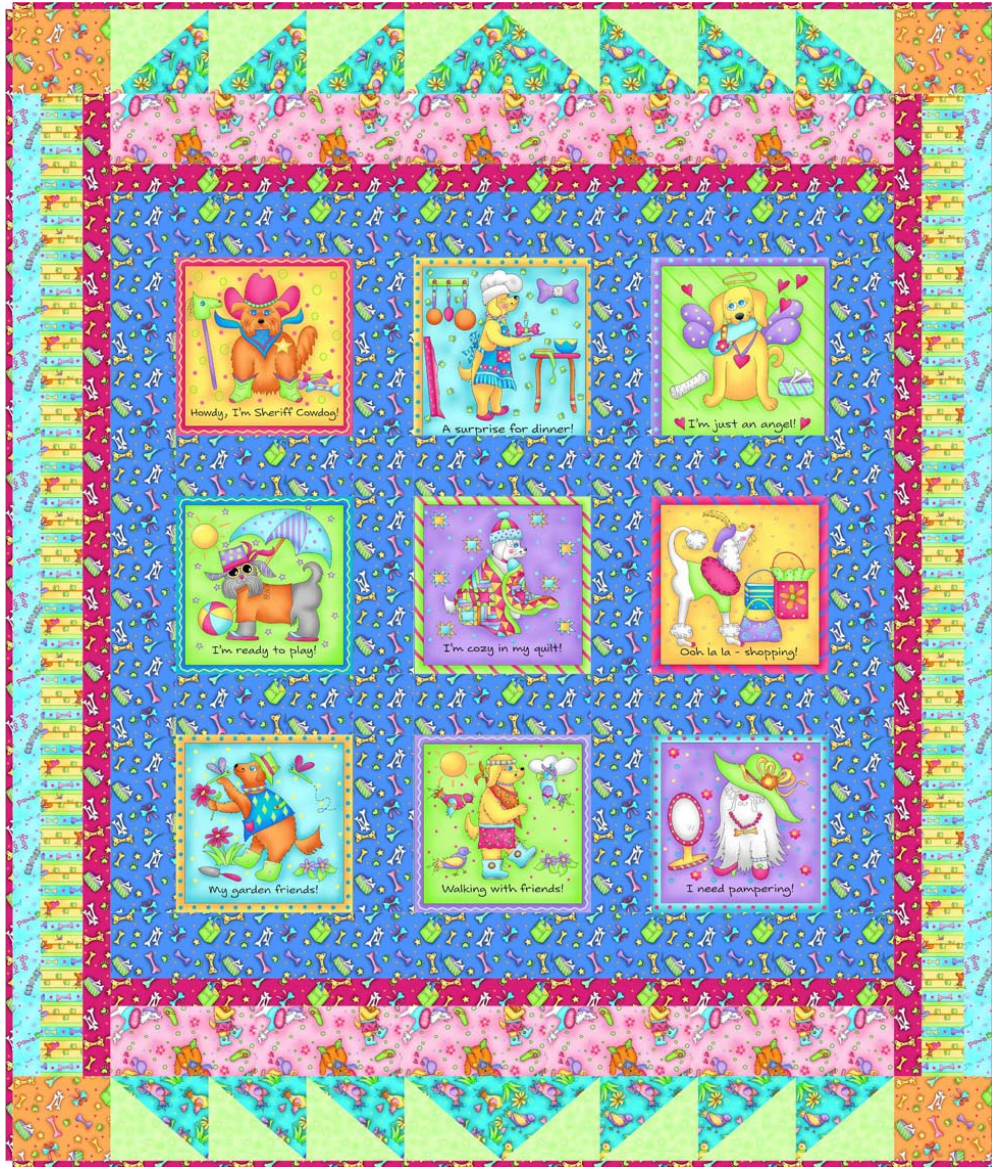


# It's A Dog' Life



**Finished Size: 52 3/4" x 62"**



20719 Q  
One Panel



20720 O  
1/4 yard



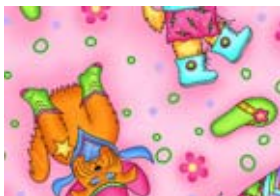
20720 V  
3/4 yard & binding



20720 Y  
1 1/4 yard



20721 Q  
3/8 yard



20722 P  
1/2 yard & backing



20723 Q  
1/4 yard



20724 SQ  
3/8 yard



20725 H  
3/8 yard

## It's A Dog's Life

Size 52 3/4" x 62"

Quilt Designed by Phyllis Dobbs

Skill Level – Advanced Beginner

### CUTTING:

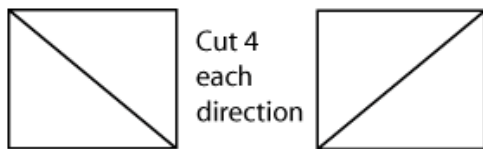
**From 20719 Q** – Fussy Cut 9 blocks, leaving 1/4" blue fabric around block

**From 20720 O** – Cut strip 5"x 23". Subcut into 4 blocks 5 11/16" x 5".

**From 20720 V** – Cut strips 2" wide and piece to form 2 strips 54 1/2" long and 2 strips 42 1/8" long.

**From 20720 Y** – Cut 2 strips 42 1/8" x 4", 2 strips 37" x 4", and 2 strips 37" x 3 3/4". Cut strips 3 3/4" wide and subcut into 6 strips 9 7/8" long.

**From 20721 Q** – Cut strips 5 5/16" wide and subcut into 8 blocks 6 1/8" x 5 5/16". Cut 4 blocks diagonally from the top right corner across and 4 blocks diagonally from the bottom right corner across. You will have 8 Half Square Triangles (HST) each direction.



**From 20722 P** – Cut 2 pieces 42 1/8" x 4 1/4".

**From 20723 Q** – Cut strips 2" wide and piece to form 2 strips 54 1/2" long.

**From 20724 SQ** – Cut 2 3/4" strips crosswise of the fabric and piece to form 2 strips 54 1/2" long

**From 20725 H** - Cut strips 5 5/16" wide and subcut into 8 blocks 6 1/8" x 5 5/16". Cut 4 blocks diagonally from the top right corner across and 4 blocks diagonally from the bottom right corner across. See diagram above. You will have 8 HST's each direction.

### Construction:

**Sew with 1/4" seam allowance and all fabrics right sides together. Press each seam toward the darker fabric as you sew.**

1. See the photo of the quilt for placement of the blocks. Join blocks vertically with the 9 7/8" wide blue strips to form 3 columns of blocks.
2. Join the 3 columns with the 37" x 3 3/4" blue strips.
3. Sew the 37" x 4" blue strips to each side edge. See the diagram below for placement of the blocks and strips.

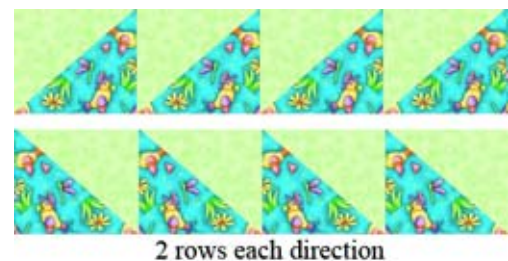


Joining Strips and Blocks

4. Sew the 42 1/8" x 4" blue strips to the top and bottom edges.
5. Sew the 42 1/8" fuchsia strips to the top and bottom edges.
6. Sew the 42 1/8" pink strips to the top and bottom edges.
7. Sew a green HST to an aqua HST, sewing together on the diagonal edges. Match the direction that they were cut. You will have 8 blocks each direction.



8. Sew 4 blocks together. Repeat with remaining blocks to sew 2 strips of blocks each direction for a total of 4 strips.



9. Sew 2 strips together, using 1 strip of each direction. Sew remaining 2 strips together.



10. Sew these strips to the top and bottom edges so that the center point is pointing outward from the quilt.

11. Sew a stripe strip to a fuchsia stripe. Sew a light blue strip to the stripe piece to form a border unit. Repeat with the remaining pieces for a total of 2 border units.
12. Sew an orange block to each end of the border units.
13. Sew a border unit to each side of the quilt, joining the border with the fuchsia fabric.

**Layer and quilt as desired.**

**Binding:**

Sew ends of binding strips together diagonally to form a continuous strip to go all the way around the quilt edge. Sew binding to the front edge of the quilt, right sides together. Miter the corners. Turn the binding to the back and fold a 1/4" hem under. Hand stitch the binding to the back.

*While all possible care has been taken to ensure the accuracy of this pattern, we are not responsible for printing errors or the way in which individual work varies.*