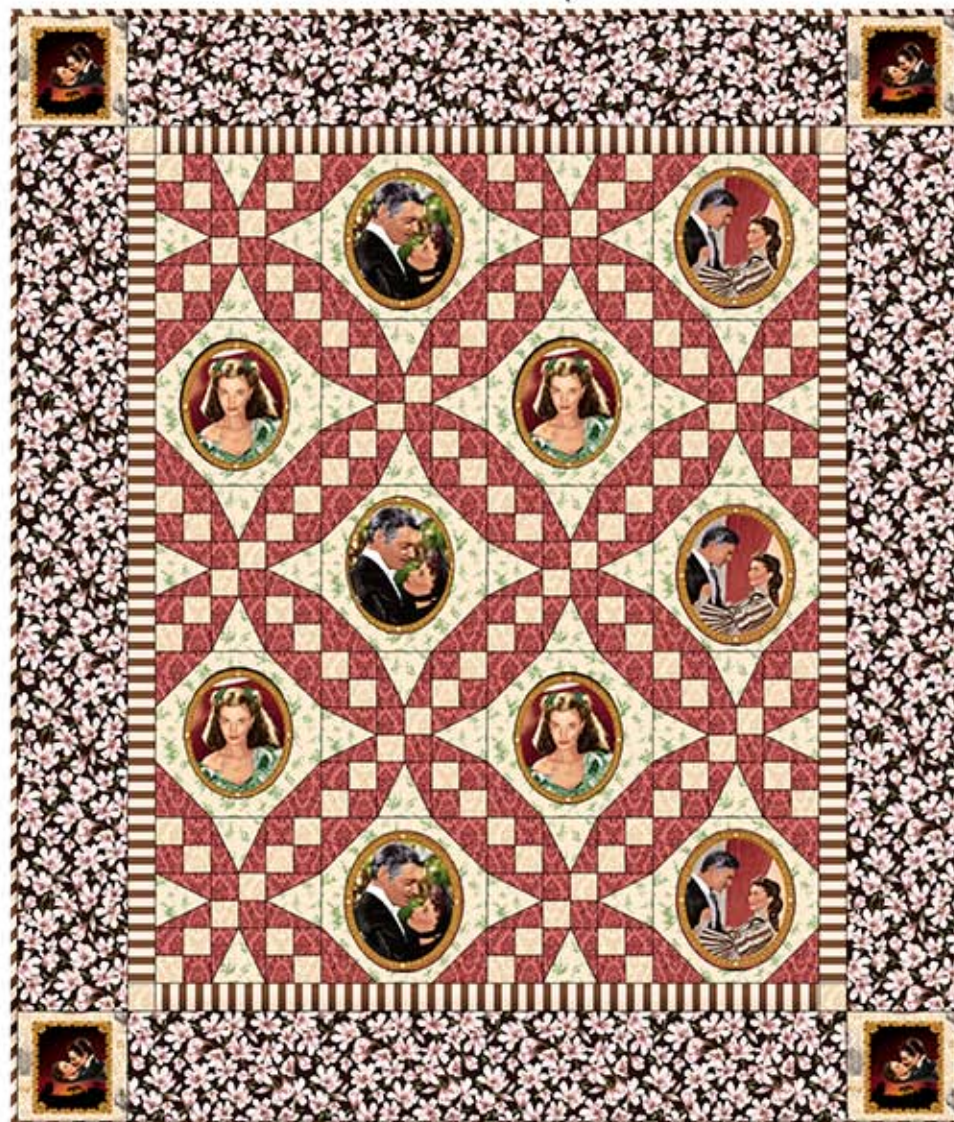


Rhett and Scarlett



Finished size: 68" x 80"



20881 A 2½ yards



20882 AE 1½ yards



20880 AG 5 yards



20879 A ¾ yard



20884 C 2 yards



20884 E ⅓ yard



20885 EG 2 yards



20983 A 1½ yards

Advanced Beginner

Quilt Designed by Vicki Niro

Finished Block Size 12" x 12"

20881A – Oval Picture Frames

Fussy Cut(10) Oval Images for Appliqué

20885EG - Green Tonal

Cut (3) 5¼" x WOF, Subcut (40) Triangles using template A

Cut (4) 12½" x WOF, Subcut (10) 12½" x 12½"

20884C – Red Tonal

Cut (7) 2½" x WOF

Cut (3) 5¼" x WOF, Subcut (40) Triangles using template C and (40) Triangles using template B

Cut (5) 4½" x WOF, Subcut (40) 4½" x 4½"

20983A – Brown Floral

Cut (6) 8½" x WOF Miter Short ends together

Cut (2) 8½" x 52½" and (2) 8½" x 64½"

20882AE – Brown/Ivory Stripe

Cut (6) 2½" x WOF Miter short ends together

Subcut (2) 2½" x 48½" and (2) 2½" x 60½"

Make 316" of 2½" wide Bias Cut Binding using your favorite method

20879 A – Picture Frame

Fussy Cut (4) 8½" x 8½" Squares, center picture frame images

20884E – Ivory Tonal

Cut (1) 2½" x WOF, Subcut (4) 2½" x 2½"

Cut (7) 2½" x WOF

20880-AG – Green Scarlet

Cut (2) 2½ yard, Sew one long selvage edge, right sides together with a 1" seam. Trim seam to ½", press open. **BACKING**

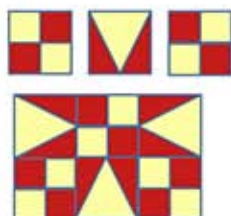
Block Assembly:

Sew Red 2½" x WOF strips to the Ivory 2½" x WOF strips. Press towards the Red. Subcut (100) 2½" x 4½" segments. Sew (2) segments together to make (50) Four Patches.



Sew the Red triangles to each side of the Green triangles. Press towards the Red.

Sew (5) Four Patches and (4) Triangle Blocks together to make a Garden Patch Block. Make (10).



Draw a diagonal line corner to corner on the Red 4½" x 4½" squares. Place a square on each corner of the Green 12½" x 12½" squares. Stitch on the drawn line. Press inside triangle open and trim away underneath excess fabric. Snowball Block. Make (10)



↑Trim away

Using your favorite appliqué method, appliqué the oval frames to the center of each Snowball block.

Quilt Center::

Following the Quilt Image sew (4) blocks together to make a Row. Make (5) Rows. Press Rows 1, 3, and 5 to the right. Press Rows 2 and 4 to the left.

Borders:

Sew an Ivory 2½" x 2½" square to each end of a Brown/Ivory Stripe 2½" x 48½". Press towards the Ivory. Inner Border 1

Sew a Brown/Ivory Stripe 2½" x 60½" to each side of the Quilt Center.

Sew the Inner Border 1 to the top and bottom of the Quilt Center. Press towards the Stripe.

Sew The Fussy Cut, Picture Frame 8½" x 8½" square to each side of the Brown Floral 2½" x 48½". Press towards the Picture Frame. Outer Border 2.

Sew the Brown Floral 8½" x 64½" to each side of the Quilt Center. Press towards the Brown.

Sew the Outer Border 2 to the top and bottom of the Quilt Center. Press towards the Brown.

Layer, Machine Quilt and Bind using your favorite method.

