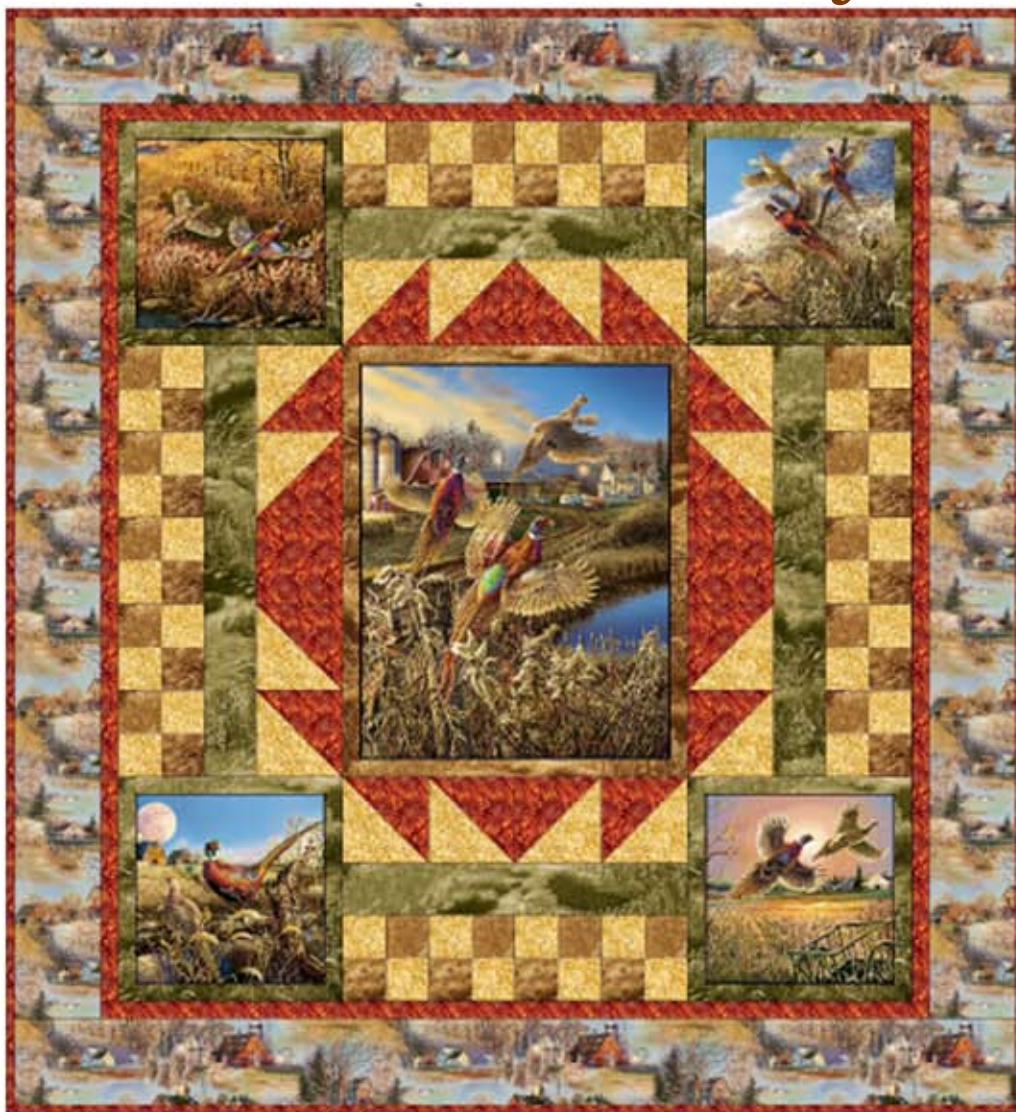


Pheasant Country



60" x 65"



20781 S 1 Panel



20783 A 2 1/4 yards



20786 R 1 1/4 yards



20785 G 1 yard



20787 S 2/3 yard



20785 A 1/2 yard



20782 A 4 yards

Pheasant Country

Designed by Karla Schultz

Skill level: Intermediate

Cutting

- 20781-S** Fussy cut four 11½" x 11½" corner squares
Fussy cut one 18½" x 23½" center rectangle
- 20785-A** Three 3" strips x width of fabric (WOF)
Four 1½" x WOF strips, subcut two 1½" x 20½" and two 1½" x 23½" strips
- 20787-S** Two 5⅞" x WOF strips, subcut eight 5⅞" squares, cut each square diagonally to yield 16 triangles.
Three 3" x WOF strips
- 20786-R** Two 5⅞" x WOF strips, subcut eight 5⅞" squares, cut each square diagonally to yield 16 triangles.
Subcut two 5½" squares from remainder of strip
Six 1½" x WOF strips for first border
Seven 2½" x WOF strips for binding
- 20785-G** Trim selvedge from one side of fabric length. *Cut strips on the lengthwise grain.*
Two 3½" x 20½" strips
Two 3½" x 25½" strips
Eight 1½" strips, from each strip subcut one 1½" x 11½" strip and one 1½" x 13½" strip
- 20783-A** Three 6½" x WOF strips for top and bottom outer borders
Two 6½" x 53½" strips on *the lengthwise grain* for side outer borders.
- 20782-A** Cut two 42" x 72" lengths of fabric. Trim selvedges. From one length, cut two 13½" x 72" strips.

Note: All seam allowances are ¼" unless otherwise specified.

Piecing:

Corner blocks: Sew a green 1½" x 11½" strip to both sides of each corner square. Press seams toward strip. Sew a 1½" x 13½" strip to top and bottom of each square. Press seams toward strip.

Center rectangle: Sew brown 1½" x 23½" strips to each side of center rectangle. Press seams toward strip. Sew brown 1½" x 20½" to top and bottom of center rectangle.

Pieced Units:

Sew gold and brown 3" strips together. Make three strip sets. Press seams open. Cut 36 – 3" units from strip sets. Join 10 units, alternating units to produce checkerboard effect. Make two. Join 8 units, in the same manner. Make two. Set aside.

Sew a green 3½" x 20½" strip to each 8 unit checkerboard. Sew a green 3½" x 25½" strip to 10 unit checkerboard.

Sew rust and gold triangles together to form 16 half-square triangle units (HST).



Reference illustration below, sew 4 HST together. Make two. Sew to one side of each green 20½" strip to complete Top and Bottom Pieced Units.



Sew two HST to each side of a red 5½" square. Make two. Sew to one side of each green 25½" strip to complete Side Pieced Units.



Quilt Center Assembly:

Sew a Corner Block to each end of a Top and Bottom Pieced Unit referencing quilt image for placement. Press seams toward Corner Blocks.

Sew a Side Pieced Unit to each side of the Center Rectangle. Press seams toward Center Rectangle.

Inner Border: Sew red 1½" x WOF strips to form one long strip. Cut two 1½" x 51½" strips for side borders, stitch to side of quilt. Cut two 1½" x 46½" strips for top and bottom borders. Stitch to top and bottom of quilt.

Outer Border: Sew two 6½" x 53½" barn print borders to sides of quilt. Sew three 6½" barn print strips together, subcut two 6½" x 58½" strips. Sew to top and bottom of quilt to complete the quilt top.

Sew backing strips together.

Layer, quilt and bind as desired.

Pheasant Country

KIT CALCULATIONS

		12 KITS	18 KITS	24 KITS
DESIGN	YARDS	BOLTS	BOLTS	BOLTS
20781 S	1 panel	1	1	2
20783 A	2 ¼	3	4	5
20786 R	1 ¼	2	2	3
20785 G	1	1	2	2
20787 S	¾	1	1	2
20785 A	½	1	1	2
20782 A	4	4	6	8