

# Young Patriots



52" x 52"



20727-E 2/3 yd.



20705-E 5/8 yd.



20709-N 1 yd.



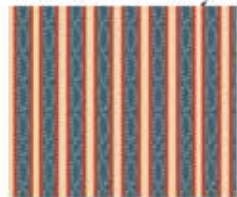
20709-R 3/8 yd.



20726-R 3/8 yd.



20726-E 1/8 yd.



20710-R 1 5/8 yd.



20708-R 1 5/8 yd.



20726-N 1/8 yd.



20705-N 1/4 yd.



20707-NR 3 1/2 yd.



20727-R 3/8 yd.



20727-N 1/2 yd.

## Young Patriots

Designed by Diane Nagle

Skill Level: Intermediate

52" x 52"

9" blocks

### Cutting:

#### **20727E Cream tone:**

1 strip 2 3/4" x WOF. Subcut (15) 2 3/4" squares.

1 strip 5 3/4" x WOF. Subcut (4) 5 3/4" squares, (12) 2 3/4" squares.

1 strip 1 1/8" x WOF. Subcut (4) 1 1/8" x 1 1/4" rectangles, (4) 1 1/8" x 1 7/8" rectangles.

1 strip 1 3/4" x WOF. Subcut (16) 1 3/4" squares.

1 strip 1 5/8" x WOF. Subcut (20) 1 5/8" squares.

2 strips 2 3/4" x WOF. Subcut (20) 1 5/8" x 2 3/4" rectangles and (4) 2 3/4" squares.

#### **20709N Blue stars:**

2 strips 3 1/8" x WOF. Subcut (16) 3 1/8" squares, (4) 1 1/4" squares.

2 strips 1 5/8" x WOF. Subcut (40) 1 5/8" squares.

3 strips 1 1/4" x WOF. Subcut (5) 1 1/4" x 8" rectangles, (5) 1 1/4" x 8 3/4" rectangles.

6 strips 2 1/2" x WOF for binding.

#### **20709R Red stars:**

1 strip 6 1/2" x WOF. Subcut (5) 1 1/4" x 5 3/4" rectangles, (5) 1 1/4" x 6 1/2" rectangles, (4) 1 1/8" x 1 7/8" rectangles, and (4) 1 1/8" x 2 1/2" rectangles.

2 strips 1 3/4" x WOF, subcut (32) 1 3/4" squares.

#### **20726E Cream small print:**

1 strip 3 1/8" x WOF, subcut (4) 1 1/8" x 3 1/8" rectangles, (4) 1 1/8" x 2 1/2" rectangles.

#### **20726R Red print:**

1 strip 8" x WOF. Subcut (5) 1 1/4" x 8", and (5) 1 1/4" x 7 1/4" rectangles, (5) 2 3/4" squares.

1 strip 3 3/4" x WOF. Subcut (4) 1 1/8" x 3 3/4" rectangles, (4) 1 1/8" x 3 1/8" rectangles.

#### **20705E Cream large print:**

1 strip 14" x WOF. Subcut (2) 14" squares (cut twice on the diagonal) for side setting triangles, (2) 7 1/4" squares (cut once on the diagonal) for corner setting triangles.

1 strip 4 3/8" x WOF. Subcut (4) 1 1/8" x 4 3/8" rectangles, (4) 1 1/8" x 3 3/4" rectangles.

#### **20710R Stripe:**

4 strips lengthwise 3" x 55" for inner borders to be mitered.

#### **20708R Outer border stripe:**

Fussy\_cut 4 strips lengthwise 5" x 55" for inner borders to be mitered.

#### **20726N Blue print:**

1 strip 6 1/2" x WOF. Subcut (5) 1 1/4" x 6 1/2" rectangles, (5) 1 1/4" x 7 1/4" rectangles.

#### **20727N Blue tone:**

2 strips 5 3/4" x WOF. Subcut (16) 1 3/4" x 4 1/2" rectangles.

1 strip 5 3/4" x WOF. Subcut (5) 1 1/4" x 5 3/4" rectangles, (5) 1 1/4" x 5" rectangles.

#### **20727R Red tone:**

1 strip 9 1/2" x WOF. Subcut (5) 1 1/4" x 9 1/2" rectangles, (5) 1 1/4" x 8 3/4" rectangles, (4) 1 1/8" x 4 3/8" rectangles and (4) 1 1/8" x 5" rectangles.

#### **20705N Blue large print:**

Cut 1 strip 7" x WOF. Subcut (4) 7" squares.

### Assembly of blocks:

**Block A: Stars inside log cabins.** Flying geese units: Draw diagonal line on wrong side of all blue star 1 5/8" squares. Place one square on end of cream 1 5/8" x 2 3/4" rectangle. Sew on drawn line, trim 1/4" seam and press. Repeat with other end. Make 20 flying geese units. Sew a flying geese unit to top and bottom of red print 2 3/4" squares. Sew cream 1 5/8" square to each end of 2 flying geese units. Sew to sides of block. Repeat to make 5 blocks.

Log cabin rounds: Sew blue tone 1 1/4" x 5" rectangle to left side of block. Sew blue tone 1 1/4" x 5 3/4" rectangle to top. Sew red star 1 1/4" x 5 3/4" rectangle to right, and red star 1 1/4" x 6 1/2" rectangle to bottom. Round 2: Sew blue print 1 1/4" x 6 1/2" rectangle to left of block, 1 1/4" x 7 1/4" to top. Sew red print 1 1/4" x 7 1/4" rectangle to right side and 1 1/4" x 8" rectangle to bottom. Last round: Sew blue star 1 1/4" x 8" to left side of block and 1 1/4" x 8 3/4" to top. Sew red tone 1 1/4" x 8 3/4" rectangle to right of block and 1 1/4" x 9 1/2" to bottom. Complete 5 blocks.

#### **Block B: Log cabin unit inside stars**

Make log cabin center of block first, starting with blue star 1 1/4" square in center. Sew cream and red strips in clockwise direction around center square, following photo and matching fabrics. First sew cream 1 1/8" x 1 1/4" rectangle to left side of blue square. Next is cream 1 1/8" x 1 1/8" to top, Red star 1 1/8" x 1 7/8" strip to right, and red star 1 1/8" x 2 1/2" to bottom.



Sew cream small print  $1\frac{1}{8}$ " x  $2\frac{1}{2}$ " rectangle to left side of block. Sew cream print  $1\frac{1}{8}$ " x  $3\frac{1}{8}$ " rectangle to top. Sew red print  $1\frac{1}{8}$ " x  $3\frac{1}{8}$ " rectangle to right side and red print  $1\frac{1}{8}$ " x  $3\frac{3}{4}$ " rectangle to bottom of block. Last round is: cream large print  $1\frac{1}{8}$ " x  $3\frac{3}{4}$ " rectangle to left side,  $1\frac{1}{8}$ " x  $4\frac{3}{8}$ " to top, and red tone  $1\frac{1}{8}$ " x  $4\frac{3}{8}$ " rectangle to right side of block, red tone  $1\frac{1}{8}$ " x  $5$ " to bottom. Make 4 units. Flying geese units (see diagram): Draw a diagonal line on back of (4) blue star  $3\frac{1}{8}$ " squares. Place 2 squares right side together on opposite corners of a cream  $5\frac{3}{4}$ " square. Sew  $\frac{1}{4}$ " from drawn line on both sides. Cut on drawn line. Press. 2 units complete. Place another blue star  $3\frac{1}{8}$ " square on remaining corner of these units, with drawn line going through corner point. Sew  $\frac{1}{4}$ " from drawn line on both sides, cut on drawn line. Press. See diagram. 4 flying geese units complete. Make 16 flying geese units. Sew a flying geese unit to top and bottom of the 4 log cabin squares, with points outward. Sew a cream  $2\frac{3}{4}$ " square to each end of 8 remaining flying geese units. Sew these units to the sides of the blocks. Make a total of 4 blocks.

### Block C: Corner blocks

Sew red star  $1\frac{3}{4}$ " square to each end of (2) blue tone  $1\frac{3}{4}$ " x  $4\frac{1}{2}$ " rectangles. Sew these units to top and bottom of a blue large print 7" square. Sew cream  $1\frac{3}{4}$ " square to red star  $1\frac{3}{4}$ " square. Make 4 units. Sew 2 units to each end of remaining 2 blue tone  $1\frac{3}{4}$ " x  $4\frac{1}{2}$ " rectangles, red touching the blue. Sew these units to sides of block. Make 4.

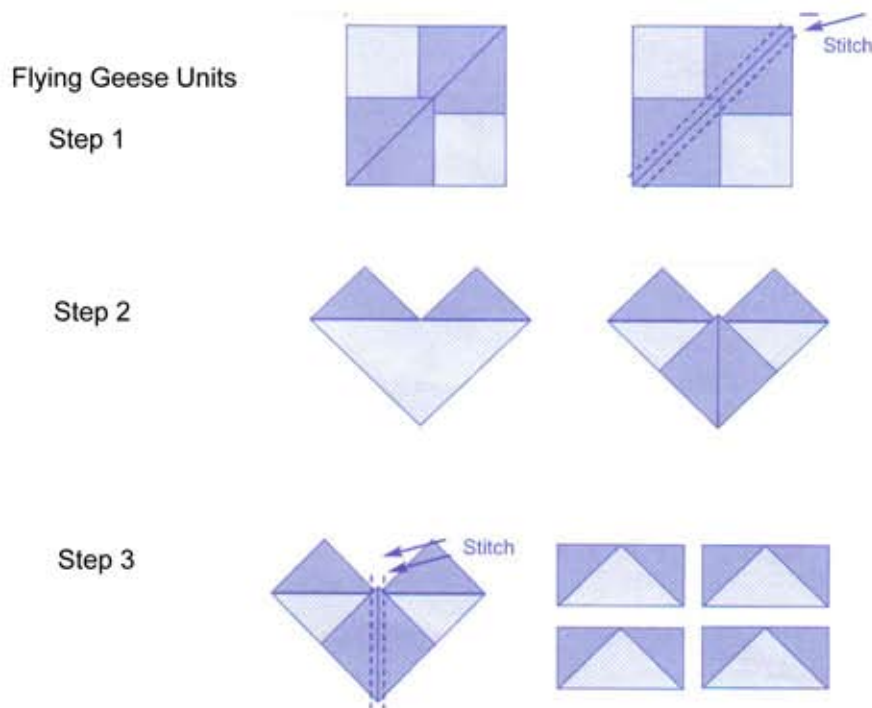
### Assembly of quilt top:

Blocks will be sewn in diagonal rows. Sew a cream large print corner setting triangle to the left side of a C block. Sew a side setting triangle to the top and bottom. This will be row 1. Following photo for color placement, making sure blocks A and B are rotated correctly, sew blocks into rows as follows. **Row 2:** Side setting triangle to block A, block B, block A, side setting triangle. **Row 3:** Corner setting triangle, Block C, Block B, Block A, Block B, Block C, corner setting triangle. **Row 4:** Side setting triangle, Block A, Block B, Block A, side setting triangle. **Row 5:** Side setting triangle, Block C, side setting triangle, and corner setting triangle last.

Sew all rows together in order, completing quilt top.

**Borders:** Sew an inner border strip to right side of an outer border strip lengthwise, make 2. Sew an inner border strip to left side of an outer border strip lengthwise, make 2. Sew all borders to quilt top, keeping inner border to inside edge. Sew to  $\frac{1}{4}$ " of ends, and miter corners.

Layer quilt, quilt as desired and bind using blue star  $2\frac{1}{2}$ " strips.



While all possible care has been taken to ensure the accuracy of this pattern, we are not responsible for printing errors or variations in individual work.